

C
S229H
1917/18

St. Lawrence College
Mount Calvary
Wisconsin



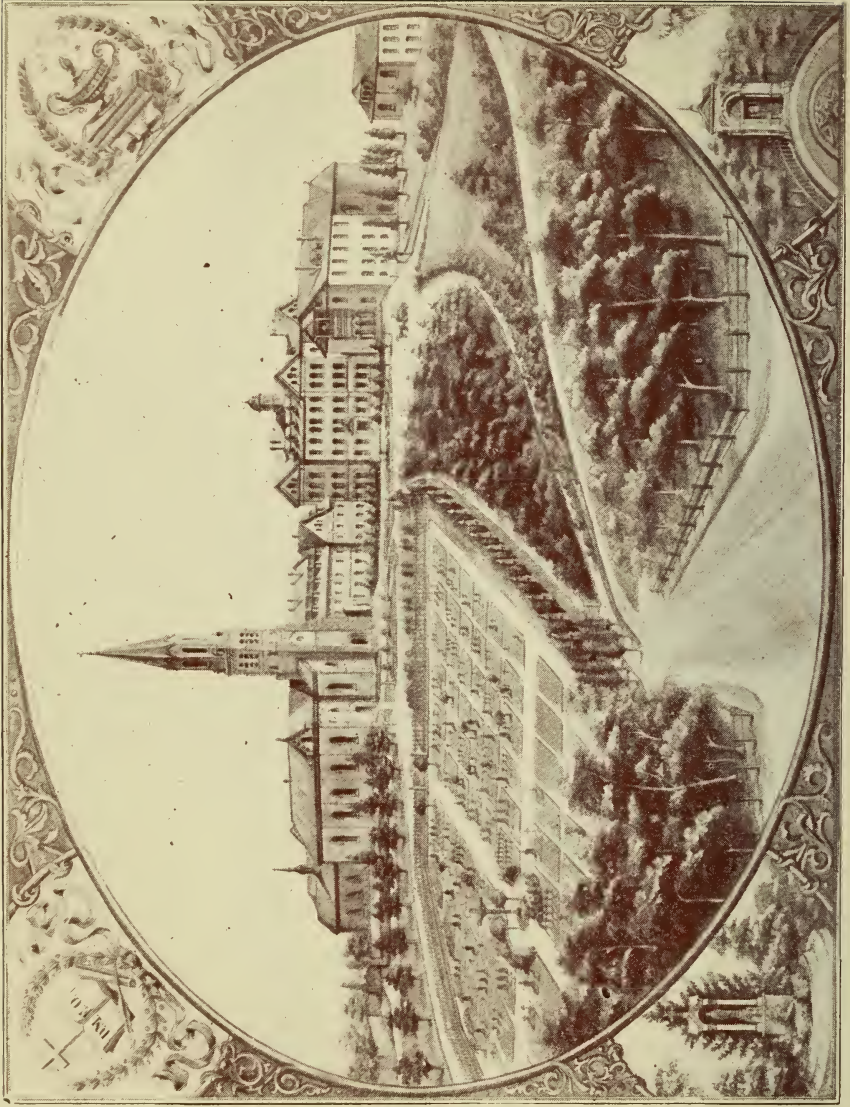
Catalogue 1917-1918

CONTENTS.

Board of Trustees	3
Officers	3
Faculty	4
Calendar	5
Foundation	6
General Information	7
Special Directions	9
Order of the Day.....	10
Religious Exercises	10
Rules of Conduct.....	11
Student's Outfit	12
Terms	12
Seraphic Scholasticate	13
Societies	14
Schedule of Courses.....	19
Schedule of Studies.....	21
Entertainments	31
Commencement Exercises	38
Awards	39
The Chronicle of the Year.....	40
Acknowledgments	45
List of Alumni.....	47

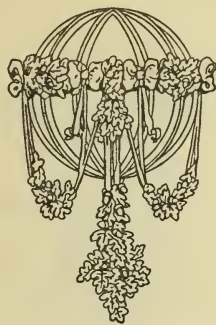


Digitized by the Internet Archive
in 2013



ST. LAWRENCE COLLEGE

CATALOGUE
OF THE
OFFICERS, FACULTY AND STUDENTS
OF
ST. LAWRENCE
COLLEGE



(MEMBER OF THE ASSOCIATION OF CATHOLIC COLLEGES)

MOUNT CALVARY, WISCONSIN
FOND DU LAC COUNTY

1917—1918

CIRCULAR OF INFORMATION

1918—1919

30 m 4 1/2



BOARD OF TRUSTEES

VERY REV. ANTONINE WILMER, O. M. CAP., *Provincial, President.*

REV. BENNO AICHINGER, O. M. CAP.

REV. JUSTIN HAUSMANN, O. M. CAP.

REV. PACIFICUS RAITH, O. M. CAP.

REV. CAPISTRAN CLAUDE, O. M. CAP.

OFFICERS

VERY REV. ANTONINE WILMER, O. M. CAP.....President

REV. PACIFICUS RAITH, O. M. CAP.....Vice-President

REV. BENEDICT MUELLER, O. M. CAP.....Rector

REV. SALESIVS SCHNEWEIS, O. M. CAP.....Prefect of Discipline

REV. THEODORE ROEMER, O. M. CAP.....Prefect of Discipline, Lib.

REV. NERIUS SEMMLER, O. M. CAP.....Director of Scholasticate

VEN. BR. JAMES REMPEN, O. M. CAP.....Infirmarian

MR. M. KELNHOFER,

MR. J. MICHELS,

MR. E. GOCKER,

MR. HY. FRANK,

MR. L. SCHOOFS,Assistant Prefects

FACULTY.

- REV. PACIFICUS RATH, O. M. CAP., *Vice-President.*
- REV. BENEDICT MUELLER, O. M. CAP.
Rector—Professor of Latin, Algebra, Arithmetic, and English Penmanship.
- REV. CORBINIAN VIERACKER, O. M. CAP.
Professor of Latin, Greek, German Literature and Rhetoric, and French.
- REV. SALESIVS SCHNEWEIS, O. M. CAP.
Prefect—Professor of Latin, Ecclesiastical and Universal History.
- REV. LEO STEINBERG, O. M. CAP.
Professor of Biblical Introduction, Christian Doctrine, English Rhetoric and Literature.
- REV. MAURUS ASCHERL, O. M. CAP.
Professor of English and German.
- REV. BONIFACE GOLDHAUSEN, O. M. CAP.
Professor of Trigonometry, Geometry, Astronomy, Physical Geography and Zoology.
- REV. THOMAS GILG, O. M. CAP.
Professor of Greek, German, Drawing, and German Penmanship.
- REV. NERIUS SEMMLER, O. M. CAP.
Professor of Christian Doctrine, Latin, Greek and Hebrew.
- REV. CELESTINE BITTL, O. M. CAP.
Professor of Philosophy, History of Philosophy, English Literature and Physics.
- REV. CAMILLUS BECKER, O. M. CAP.
Professor of Christian Doctrine, English Grammar, Literature and Arithmetic.
- REV. VICTOR MUELLER, O. M. CAP.
Professor of Latin and Greek.
- REV. THEODORE ROEMER, O. M. CAP.
Prefect—Professor of Latin, English, and Botany.
- REV. ROGER GANS, O. M. CAP.
Professor of German, U. S. History and Geography.
- MR. ALPHONSE STAEGER,
Professor of Instrumental and Vocal Music.

CALENDAR

1918

- June 18—End of current collegiate year. Mass of Thanksgiving. Benediction.
- Sept. 4—Examination of conditioned students and of applicants for advanced classes.
- Sept. 5—Formal Opening. Solemn Mass of the Holy Ghost. Veni Creator. Benediction. Classes resumed.
- Oct. 1—Annual Retreat opens.
- Oct. 4—St. Francis Day.
- Nov. 12—St. Lawrence Day. Patron-feast of the College.
- Nov. 28—Thanksgiving Day.
- Dec. 22—Christmas Vacation begins.

1919

- Jan. 7—Classes resumed.
- Jan. 24—31—Mid-year Examinations.
- Feb. 22—Washington's Birthday.
- March 7—St. Thomas Aquinas Day.
- April 30—Rector's Day.
- May 1—May Day. Procession to our Lady's Shrine.
- May 7—St. Joseph's Day.
- May 30—Memorial Day.
- June 5—Field Day.
- June 20—Commencement.
-

Every Thursday afternoon is a half holiday. The Rector may grant an occasional half holiday in fall or spring, when outdoor exercises would seem beneficial.

FOUNDATION

The establishment of the Capuchin Fathers at Mt. Calvary, in 1856, led to the foundation of a college in which postulants for the Order might be prepared for their vocation. To make this College more generally useful, its doors were opened in 1861 to young men aspiring to the holy priesthood among the secular clergy. The attendance during the first years was small and the growth of the institution slow, owing to the poverty of the founders, the limited means of the early Catholic settlers and all those difficulties and embarrassments with which pioneers must contend. The modest beginning, however, continued to prosper, almost every year witnessing some addition or alteration, until the traditional quadrangle of the monastery was completed and surrounded by a group of buildings for the accommodation of students.

The main building of the present College was erected in 1881, and in the same year the Province of St. Joseph of the Capuchin Order was incorporated, pursuant to the Laws of the State of Wisconsin, for the purpose of conducting churches and colleges.

GENERAL INFORMATION

DIRECTION—St. Lawrence College stands under the direction of the Capuchin Fathers of the Province of St. Joseph, whose Provincial is ex-officio President of the College and whose Definitors are its Trustees.

NAME—Its patron and model is St. Lawrence, an illustrious Saint of the Order of Capuchins. Born at Brundisium, Italy, July 22, 1559, he entered the newly founded Order of Capuchins at the age of 16. In his earliest youth he had exhibited a wonderful development of the faculties of his mind and heart, and in his higher studies at Padua he excelled above all his competitors in intellectual penetration, retentive memory, gentle disposition and untiring diligence. His knowledge of Latin, Greek, Hebrew, Chaldaic, German, Bohemian, French and Spanish was considered miraculous. His faculty in dealing with the most intricate philosophical and theological questions, together with oratorical powers and profound piety, caused him to be appointed Lector of the Venetian Province of the Order when only 22 years of age. He soon after became Guardian, in 1587; Provincial, in 1593; Definitor General, in 1596; Papal Legate to Germany, in 1599; the inspiring director of the Christian forces against the Turks, in 1601; General of the Order, in 1602; Papal Envoy to Germany, in 1606; to Bavaria, in 1609; to Spain, in 1619. He died July 22, 1619, was beatified in 1783, and canonized by Leo XIII, December 8, 1881.

OBJECT—The general aim of this institution is to educate young men for the holy priesthood. A special aim is to prepare aspirants for the religious life in the Capuchin Order.

LOCATION—St. Lawrence College enjoys a very beautiful location 600 feet above Lake Michigan and 400 feet above Lake Winnebago, only a few miles distant. It is sufficiently elevated to enjoy a bracing atmosphere, at the same time sufficiently remote from the chilling vapors of the lake. In its elevated location it commands a charming view of one of the most fertile and best cultivated sections of Wisconsin. The surrounding grounds have been attractively improved, to make Mt. Calvary a secluded and pleasant retreat for the lover of study.

ACCESSIBILITY—Mt. Calvary is a small village 12 miles east of Fond du Lac and one mile and a half from Calvary, a sta-

tion on the Fond du Lac and Sheboygan branch of the Chicago & Northwestern railroad. Connections are made at Fond du Lac with the main line of the Chicago & Northwestern, the Chicago, Milwaukee & St. Paul, and the Wisconsin Central roads; at Plymouth with the Milwaukee & St. Paul; at Sheboygan with the Lake Shore line. Trains leave Fond du Lac at 10:15 a. m. and 4:50 p. m.; Sheboygan at 7:00 a. m. and 2:15 p. m. Best connections are made by way of Fond du Lac.

THE BUILDINGS—The church with the monastery are brick structures forming a large quadrangle. In the south wing of the latter are the kitchen and refectory for the students. The main building of the College is a massive edifice with a basement and four stories, containing study halls, dormitories, recitation rooms, recreation rooms, etc. St. Joseph's Hall contains a spacious dormitory, several rooms for piano practice and rehearsals, as well as a trunk room. St. Thomas Hall is devoted to literary assemblies, dramatical and musical entertainments and gymnastic exercises. A beautiful chapel has been erected at great cost for the exclusive use of the students. It is furnished with artistic altars, numerous statues and tasty decorations.

METHODS OF TEACHING—The success of our educational work is secured by the uniformity of method in the teaching of all instructors, who, in regular conference, deliberate on the methods most natural, thorough and effective for the advancement of the student in the various branches of study, and faithfully adhere to the adopted methods of the institution.

DISCIPLINE—For the maintenance of order, reasonably strict regulations are necessary. The students are under the supervision of the Rev. Fr. Prefects or their assistants; but obedience to the rules is enforced more by moral motives than by severe methods. The Rev. Rector reserves the right to dismiss any student, who, after repeated admonition, shows a character so doubtful as to require extraordinary supervision.

SCHOLARSHIPS—A limited number of scholarships is granted to poor and deserving boys who aspire to the holy priesthood in the Capuchin Order.

DEGREES—This institution, by virtue of the charter of the Province of St. Joseph of the Capuchin Order, is empowered "to confer such degrees and grant such diplomas as are usually conferred by similar institutions."

SPECIAL DIRECTIONS

Parents and Guardians, for obvious reasons, are earnestly requested to send their sons and wards at the beginning of September.

Boys under 12 years of age will not be admitted.

Satisfactory testimonials of good conduct will be required for those who come from other institutions.

Candidates for admission to advanced classes must pass an examination, after which they will be assigned to the class for which they are found qualified.

Students who receive permission to leave the institution for brief visits will report to the Rev. Rector before leaving and immediately after their return.

When a student takes sick he will be carefully nursed, and, should his illness prove dangerous, parents and guardians will receive timely notice. Extraordinary expenses for medical attendance will be charged to the student.

All necessary books, stationery, etc., can be bought at the College at current prices.

No advances will be made by the college for stationery, clothing, pocket money, fares or other expenditures, unless a sufficient sum has been deposited with the Rev. Rector.

Parents and guardians should allow their sons and wards only a moderate amount of pocket money, which should be deposited with the Rev. Rector, who will give it as prudence may suggest.

Express charges on parcels sent to students must be *prepaid*. Eatables should not be sent to students, except during the Christmas and Easter holidays.

All accounts must be settled before the student leaves the Institution.

Should a student enter after the beginning or leave before the end of a term, no deduction will be made for less than a month.

Students should not be called home during the term except for the most urgent reasons.

ORDER OF THE DAY

Forenoon

- 5:15—Rising and Toilet.
- 5:45—Morning Prayers and Meditation.
- 6:05—Holy Mass.
- 6:40—Studies.
- 7:00—Breakfast and Recreation.
- 8:00—Classes for all.
- 11:00—Dinner and Recreation.

Afternoon

- 1:00—Classes or Studies.
- 2:00—Classes for all.
- 4:00—Recreation.
- 4:45—Rosary.
- 5:00—Studies.
- 6:00—Supper and Recreation.
- 7:00—Studies.
- 8:30—Night Prayer. Retiring.

RELIGIOUS EXERCISES

Daily

1. Morning Prayers, Meditation, Holy Mass, and Holy Communion.
2. After Dinner: Visit to the Blessed Sacrament.
3. Rosary.
4. Night Prayers.

Weekly

On Sundays (Holy days): High Mass and Sermon at 8:00 a. m.; Vespers and Benediction with the Blessed Sacrament at 2:00 p. m.

Monthly

1. Devotion to the Sacred Heart on the First Friday and Sunday.
2. Devotion to the Blessed Virgin on the Third Sunday.
3. Meeting of the members of the Third Order.

Yearly

1. A Spiritual Retreat of three days.
2. May Devotion.
3. The six Sundays in honor of St. Aloysius.

RULES OF CONDUCT

1. Students are requested to attend the religious exercises with the greatest reverence and devotion.

2. All are expected to approach the Holy Sacraments of Penance and Eucharist frequently.

3. Students should show themselves, on all occasions, obedient and respectful to the Rev. Rector, the Rev. Prefects, the Professors and the Assistant Prefects.

4. Repeated resistance to the Officers of the College will be punished with expulsion.

5. No student is allowed to leave the College or visit any private house, store or family without the Rev. Rector's permission.

6. Students are not permitted to enter private rooms nor any other study hall than that to which they have been assigned.

7. During the hours of recreation, if the weather permits, students are to be on the play ground.

8. Familiarity between junior and senior students will not be tolerated.

9. All running, jumping, whistling, screaming within the College is strictly forbidden.

10. Students damaging any property of the Institution will be held responsible for the value thereof.

11. Books, papers, periodicals, etc., are not allowed circulation in the College, unless previously revised by the Rev. Rector.

12. The use of tobacco is forbidden, except for students who have reached the age of eighteen and have furnished a written request from their parents or guardians that permission to use tobacco is granted. These may smoke at certain times; but the use of chewing tobacco and cigarettes is absolutely prohibited.

13. All letters written by students must be put into the letter box unsealed. Letters addressed to students are opened by the Rev. Rector. Too frequent correspondence will be checked.

14. Correspondence with students who have been dismissed for bad behavior is prohibited under pain of expulsion.

15. Students using immodest or irreligious language or exerting a bad influence upon their fellow students will be dismissed, if other punishment proves ineffectual.

STUDENT'S OUTFIT

Although the quantity and quality of wearing apparel will depend on the condition and means of parents, yet every student is required to have changes of clothing sufficient to be at all times neatly and respectfully dressed; hence he should bring with him two suits for daily wear and one for Sundays, six shirts, six pair of stockings, a pair of slippers, six pocket handkerchiefs, four towels, four napkins, knife, etc., two or three pair of shoes, two or three sets of underwear, two hats or caps, one overcoat, a toilet box containing comb, mirror, brushes, etc.

All articles to be washed must have the number given to the student by the Rev. Prefect. Applicants may write for this number during vacation time.

TERMS PER SESSION OF FIVE MONTHS

Board and Tuition	\$100.00
Piano and use of piano (or organ)	15.00
Violin or other instrument (not piano or organ)	7.50

Payment for each Session must be made invariably in advance.

No extra charges are made for the studies of French or Drawing.

Remittances should be made by Draft, Check, Express Order payable at Calvary (Station), Wis.; Postal Order payable at Calvary or Mt. Calvary (Post Office), Wis., or by Registered Letter.

In sending parcels or letters, remember that the Railroad Station, Freight and Express Office is CALVARY, the Post Office is MT. CALVARY.

All letters of inquiry should be addressed to the

REV. RECTOR OF ST. LAWRENCE COLLEGE

Mt. Calvary, Fond du Lac Co., Wis.



NEW SCHOLASTICATE BUILDING

SERAPHIC SCHOLASTICATE

The Seraphic Scholasticate offers special advantages to students desiring to become members of the Capuchin Community, and to serve God more disinterestedly as priests in the religious order. For the Scholastics a special building was erected in the year 1917. They wear a light habit of brown cloth and take part in several of the religious exercises of the community, which enables them to observe and become familiar with the usages and practices of religious life before assuming its responsibilities. They are under the special guidance of a spiritual director, and visit the College only to attend classes at the regular classical course.

Before students are admitted into the Scholasticate they must have been pupils of St. Lawrence College for at least one year and must have completed the second Latin Class.

The annual charges are:

For Board, etc. \$90.00

REV. NERIUS SEMMLER, O. M. CAP.,

Director.

SOCIETIES

I.—Third Order of St. Francis

The Third Order of St. Francis presents the best rule of conduct in the service of God and the work of salvation in every walk of life and under the most varied circumstances. Whosoever lives according to the letter and spirit of this holy rule is preserved from danger to his eternal salvation, receives numerous graces and inspirations for his sanctification, and will, in sentiment and action, be a true servant of God. Pope Leo XIII, himself a Tertiary, has brought the merits of the Third Order before the world in an admirable encyclical, as the remedy for the evils of our times, so nearly resembling the time for which that true reformer, St. Francis, instituted this Order. His urgent appeal to the bishops of the world to propagate the Third Order has made it popular with cardinals, bishops and priests. The late Pope Pius X was a Tertiary and our present Pontiff Benedict XV is a Tertiary. Enrollment in the Third Order is therefore encouraged among the students. Applicants must be 16 years old. The members have monthly meetings and devotions in the college chapel.

Director—Rev. Theodore Roemer, O. M. Cap.

President—E. Kaemmerling.

Discreets—J. Feest, J. Juricek, D. Barthelemy, J. Pfister.

Members—90.

II.—Society for the Propagation of the Faith

The general object of this association is to assist, by prayers and alms, the Catholic missionaries who are engaged in preaching the Gospel in heathen and non-Catholic countries. Its special object is to foster in those aspiring to the holy priesthood live interest in the growth of the Church, zeal for the salvation of souls and the strengthening of their vocation.

Director—Rev. Benedict Mueller, O. M. Cap.

Promoters—A. Wibbert, J. Whittle, R. Feehan, P. Boshold,
F. Rauch, J. Martins.

Members—130.

III.—Archconfraternity of the Sacred Heart

The object of the society is to foster and promote among the students a tender devotion to the Sacred Heart of Jesus.

Each student, on entering the College, becomes a member of this society, and is expected henceforth not only to avoid all improper and indecent language, but also to prohibit, as much as he can, the circulation and reading of such books, pamphlets, etc., which are inconsistent with sound morality. The society meets once a month in the college chapel.

Director—Rev. Benedict Mueller, O. M. Cap.

IV.—St. Lawrence College Alumni Association

This organization was organized Nov. 6, 1901, and incorporated Nov. 20, 1902. Its object is the reunion of early graduates, the cultivation of friendship with the later graduates of the College, and the promotion of the interests of the Alma Mater.

Officers

President—Rev. F. Jansen, Elkhart, Ind.

Vice-President—Mr. G. Fisher, Fond du Lac, Wis.

Secretary and Treasurer—Rev. F. C. Kleser, Milwaukee, Wis.

Historian—Rev. Salesius Schneweis, O. M. Cap., Mt. Calvary, Wis.

Executive Committee—Rev. Benedict Mueller, O. M. Cap., Mt. Calvary, Wis., Chairman; Rt. Rev. Msgr. P. J. Lochman, Kaukauna, Wis.; Rev. M. J. Graettinger, Milwaukee, Wis.; Rev. J. H. Kessler, Jefferson, Wis.; Rev. C. V. Stetter, D. D., Kentland, Ind.

Members—210.

V.—St. Thomas Literary Society

This society aims to prepare its members for public speaking by according them ample opportunity of acquiring ease and fluency of expression. It promotes literary culture and stimulates to seek information on instructive subjects.

The regular exercises consist in debates, discussions, dialogues, speeches, recitations, declamations and essays. Meetings are held weekly and are conducted in a strictly parliamentary way.

Director—Rev. Salesius Schneweis, O. M. Cap.

Officers—J. Kalisek, President; J. Feest, Vice President; M. Kelnhofer, Master Critic; E. Allman, Secretary; H. Hoffman, Treasurer; A. Schuh, Librarian; J. Burke, Ass't. Librarian; P. Meyer, Custodian; I. Esser, Censor.

Members—53.

The following resolutions were debated on and discussed during the past academic year :

1. Resolved, "That Capital Punishment Should be Abolished in the United States."

Affirmative—R. Derrick, H. Bube, J. Daleiden, J. Feider.

Negative—C. Davenport, D. Barthelemy, J. Burke, C. Kern.

2. Resolved, "That Moving Pictures are Detrimental to Humanity."

Affirmative—M. Kremer, A. Madel, E. Picard, I. Esser.

Negative—E. Allman, C. Dickopf, C. Havlick, E. Gocker.

3. "Granting primitive creation and subsequent evolution, Resolved, That Man Zoologically Descended from the Brute."

Affirmative—P. Meyer, H. Hoffman, M. Kelnhofer, J. Boecher

Negative—E. Kaemmerling, F. Gruenheck, J. Kalisek, L. Loerke.

4. Resolved, "That the Government Control all Trusts and Eventually Cause their Dissolution."

Affirmative—C. Dionne, H. Kopf, J. Bourassa, W. Holzemer.

Negative—F. Egel, E. Westenberger, Jos. Michels, W. Braun.

Discussions

1. "During War Time is a Free-Speech and a Free Press Detrimental or Advantageous to the Representative Government?"

Led by A. Wibbert.

2. "Laws Should be Enacted Providing that in case of Personal Injury to an Employee, Arising out of and in the Course of Employment, his Employer shall be Liable to Adequate Compensation and shall not set up Contributory Negligence or the Negligence of a Fellow-servant as a Defense."

Led by J. Feest.

3. Resolved, "That, as Society is Constituted at present, the Liquor Saloon performs Desirable Social Functions and is Beneficial to Social Life."

Led by I. Esser.

VI.—St. Lawrence Literary Society

This society was organized to give junior students an opportunity to develop their talent in reading, recitation, dialogue and essays.

Director—Rev. Theodore Roemer, O. M. Cap.

Officers—H. Pick, President; F. Rauch, Vice President; E.

Wagner, Master of Critic; H. Schmitz, Secretary; L. Schoofs, Treasurer; W. Wagner, Librarian; A. Poeckes, Custodian.

Members—75.

VII.—Reading Club

The Reading Club admits only students of the higher classes. The members meet during the longer free-times, especially on Sundays and holidays, in a room designated for the purpose. Among the magazines, periodicals, papers, subscribed to by the club during the past years were the following: Excelsior, Katholischer Jugendfreund, Columbia, Ave Maria, Catholic Missions, Salesian Bulletin, The Messenger of the Sacred Heart, Benziger's Magazine, Child of Mary, Our Young People, The Illustrated World, The New World, The World's Work, The Bookman, The America, The Sentinel of the Blessed Sacrament, The Catholic Tribune, The Indiana Catholic, The Field Afar, and The Seraphic Chronicle.

Custodian—J. Kalisek.

Members—45.

VIII.—College Choir

The purpose of the College Choir is to cultivate vocal music, especially the Gregorian and Cecilian Chant. Its members sing at Solemn Services in the Chapel and at entertainments in St. Thomas Hall. It rehearses twice a week.

Director—Prof. A. Staeger.

Members—28.

IX.—College Cornet Band

This provides music for the various social entertainments throughout the year. It contributes also to the solemnity of the Corpus Christi Procession, the May Day Procession, and similar occasions. Rehearses twice a week.

Members—27.

J. KALISEK, Leader	Solo Baritone
A. SCHUH, Ass't. Leader	Solo Slide Trombone
C. DIONNE	Solo Bb Cornet
H. SCHMITZ	Solo Bb Cornet
H. PICK	1st Bb Cornet
M. BAUER	2d Bb Cornet
R. LOSLEBEN	3d Bb Cornet
J. MLSNA	4th Bb Cornet
A. CRAMER	Eb Cornet
J. VESELY	Solo Bb Clarinet

J. MICHELS	1st Bb Clarinet
J. HOFFMANN	2d Bb Clarinet
J. BURKE	Eb Clarinet
F. EGEL	Piccolo
C. DICKOPF	Baritone
E. ALLMAN	1st Slide Trombone
N. LANGENFELD	2d Slide Trombone
C. BECKER	3d Slide Trombone
W. BRAUN	1st Bb Tenor
R. FEEHAN	2d Bb Tenor
L. LAUERMANN	1st Eb Alto
W. WAGNER	2d Eb Alto
H. MILLER	3d Eb Alto
H. MAURER	Eb Bass
E. GOCKER	Baritone Saxophone
E. WESTENBERGER	Snare Drum
E. WAGNER	Bass Drum

X.—College Orchestra

PROF. ALPH. STAEGER, <i>Director</i>	1st Violin
F. RAUCH	1st Violin
J. BECKER	1st Violin
G. VANDER BECKEN	1st Violin
G. SONNEN	1st Violin
J. BOURASSA	2d Violin
E. WAGNER	2d Violin
A. CRAMER	2d Violin
J. VESELY	1st Clarinet
J. MICHELS	2d Clarinet
F. EGEL	Piccolo
C. DIONNE	1st Cornet
H. SCHMITZ	2d Cornet
A. SCHUH	Slide Trombone
L. LAUERMANN	1st French Horn
W. WAGNER	2d French Horn
J. JURICEK	Cello
J. KALISEK	Bass
J. WHITTLE	Piano
E. WESTENBERGER	Drums and Traps

Athletic Association

The students have also organized several clubs for outdoor and indoor recreation.

SCHEDULE OF COURSES

The College comprises a *Classical* and a *Philosophical* Course.

The *Classical Course* covers a period of five years and embraces the study of Latin, Greek, English, German, French, Grammar, Composition, Rhetoric, Literature, Mathematics, History, Geography, the Elements of Botany, Zoology, Physical Geography, and Physics.

The *Philosophical Course* extends over two years. In the first year the Classics are completed. The other branches taught are: Logic, General Metaphysics, Natural Theology, Ethics, History of Philosophy, Biblical Introduction, Church History, one of the Natural Sciences, Hebrew, Bookkeeping and Commercial Law.

Christian Doctrine receives the most careful attention, as there can be no real education or effective moral training without it. This instruction is based upon Catechism and Bible History in the first and second classes, upon the exposition of the Ecclesiastical Year in the third class and upon the evidences of the Catholic Religion in the fourth and fifth classes.

Latin is taught in all grades of the Classical Course. Paramount attention is paid to Precepts and Practice and the memorizing of Paradigms. No amount of translation of the prose and poetical Models is specified, but much time is devoted to the analysis and remodeling of the selections from classical authors. Translations from English into Latin, several times a week, in all grades, afford the student ample opportunity to appropriate the words and phrases, upon which he has been drilled in reading the Models.

Greek is taken up in the second year, and continued during four years on the same plan as the Latin. Three hours are devoted to it every week.

English is taught in all its phases: Penmanship, Spelling, Grammar, Composition, Rhetoric and Literature. The study of the English language receives all the attention due to its prime importance as the language of our country. Three hours a week.

German is obligatory in all courses in view of its essential value as an accomplishment, and its positive benefit in active life. The study of German includes Penmanship, Etymology, Syntax, Composition, Rhetoric, Poetry and Literature. Prayers

and exhortations are alternately German and English. Three hours a week.

French is optional for students of the third year and higher classes. On account of the literary and practical value of the French language, its study is recommended. Two hours a week.

Arithmetic is one of the foremost branches in the first and second year classes. Algebra in the third and fourth, Geometry in the fourth and fifth, Trigonometry in the sixth. Three hours a week.

History is taken up in the first class. Bible History and United States History furnishing the texts for the first and second classes, Universal History in the third, fourth and fifth, Church History in the seventh. Mythology is treated with the Latin and Greek Classics. Two hours a week.

Geography is treated as supplementary to History and as a prolific source of culture, in the first class. Two hours a week.

Sciences have been taught this year in the departments of Botany, Zoology, Physical Geography, Physics and Astronomy. Two hours a week.

Drawing may be taken once a week, to acquire facility in the use of pencil and crayon in free hand sketching of landscape, portrait and architectural designs. Advanced students receive instruction in water color and oil painting free of charge, except for materials.





COLLEGE CHAPEL

SCHEDULE OF STUDIES

Classical Course

First Academic

CHRISTIAN DOCTRINE—Deharbe-Pustet's German-English Catechism No. 2, Parts II and III. Commandments. Means of Grace. Schuster's Bible History. New Testament. (Combined with II Academic.)

LATIN—Schultz's Grammar and Exercises. Declensions of Nouns, Adjectives, and Pronouns, Numerals, Regular and Deponent Verbs. Daily Exercises and Drills. Extemporaneous Tests. Monthly Scriptions.

ENGLISH—Steps in English, by Morrow, Book II, Part I and II. Gilmour's Fifth Reader. Dictations and Spelling. Composition. Quarterly Scriptions.

GERMAN—Sommer, Deutsche Sprachlehre. Die Formenlehre. Lang's Lesebuch, I. Teil. Ausgewaehlte Stuecke. Aufsaezte. Grammatische Schulaufgabe einmal jede Woche. Diktat zur Uebung im Rechtschreiben woeentlich einmal. Muendliche Uebungen in Grammatik. Lesen einmal in der Woche, verbunden mit Uebersetzung und Erklaerung. Scriptionen.

ARITHMETIC—Commercial, Williams and Rogers'. Simple and Denominate Numbers, Common Fractions, Decimals. United States Money. Square and Cube Root. Percentage, Profit and Loss, Trade Discount, Storage, Commission. Quarterly Scriptions.

GEOGRAPHY—Maury's New Complete Geography. Quarterly Scriptions.

HISTORY—McMaster's School History of the United States. Discovery of America. Spanish, French and English Explorers. Planting of Colonies. Life in the Colonies. Quebec, New-France and Louisiana. Struggle for Independence. Special Lectures on Revolution, exhibiting true history of same. Making and Framing of the Constitution. Origin of Parties' Struggle for Commercial Independence. Progress in Our Country after the Revolution. Settlement of Our Boundaries. Explanatory Lectures. Quarterly Scriptions.

BOTANY—L. H. Bailey, *Botany for Secondary Schools*. The Plant and Its Parts. Propagation. Food Reservoirs. Pruning. Nutrients. Root Action. Food Elaboration, and Respiration. Dependent Plants. Morphology. Climbers. Flowers. Fertilization and Pollination. Fruits. Seeds. Germination. Phenogams and Cryptogams. The Plant in Its Relation to Environment and to Man. Practical Plant Studies and Classification. Examination of Plants and Plant Conditions in this Locality. Quarterly Scriptions.

PENMANSHIP—German, Krone's Series; English, Muscular Movement Drill.

DRAWING—Pencil and Crayon. Landscape. Figures.

SINGING—Theory and Practice. Vatican Kyriale. Vesperale Romanum.

Second Academic

CHRISTIAN DOCTRINE—Deharbe-Pustet's German-English Catechism No. 2, Parts II and III. Commandments. Means of Grace. Schuster's Bible History. New Testament. (Combined with I Academic.)

LATIN—Schultz's Grammar and Exercises. Irregular, Inchoative, Defective and Impersonal Verbs. Comparison of Adverbs. Prepositions. Introduction to Latin Conversation. Reading in Latin: Views of Nature. Nepos: Themistocles, Aristides. Written Exercises three times a week. Extemporaneous Tests. Monthly Scriptions.

GREEK—Kaegi-Kleist's Short Grammar, Etymology: Declensions, Comparison of Adjectives and Adverbs, Prepositions, Tenses of the Pure Verb. Exercise Book I. Select Translations. Written Exercises three times a week. Scriptions.

ENGLISH—Steps in English, Book II completed. Composition precepts. Selections from Catholic National VI Reader. Extemporaneous Tests. Composition four times a semester. Quarterly Scriptions.

GERMAN—Sommer, *Deutsche Sprachlehre*. Die Satzlehre und Regeln der Rechtschreibung. Lang's Lesebuch. Grammatische Schulaufgaben und Diktat zur Uebung im Rechtschreiben einmal woechentlich. Muendliche Uebungen und praktische Anwendungen der Grammatikregeln. Lesen und Nacherzaehlung, einmal jede Woche. Schriftliche Aufsaezte

und freie Bearbeitung nach Skizzen, monatlich einmal. Scriptionen.

ARITHMETIC—Commercial, Williams and Rogers'. Abstract and Applied Percentage. Custom-House Business, Taxes, Insurance, Interest, True Discount, Bank Discount, Partial Payments, Equation of Accounts, Ratio and Proportion, Partnership, Stocks and Bonds, Exchange. The Forms of Negotiable Paper fully explained. Quarterly Scriptions.

ALGEBRA—Milne's High School Algebra. Entire Quantities. Factoring.

HISTORY—McMaster's History of the United States. Our Boundaries Defined, the Rising West, War with Mexico, Expansion of Slave Area. Civil War, Reconstruction of South, the New West, the French in Mexico, Spanish-American War, Annexation of Hawaii, the Presidents (1820—1915), Industrial and Mechanical Progress, Financial and Political Problems from President Monroe's Administration up to our day. Reference made to Standard Authors. Explanatory and Amplificatory Lectures and Readings. Explanatory Lectures on Civil Government. Quarterly Scriptions.

ZOOLOGY—Robert W. Hegner, Practical Zoology. Insects: their Structure; Insects and Vegetation; Insects and Man; Insects and Disease. Arachnids and their Relation to Man. Crustaceans—Mollusks, Worms, Echinoderms, Coelenterates, Protoza. Vertebrates: The Frog, a Typical Vertebrate; Structure and Activities of Fishes; their Relations to Man. Amphibians—Reptiles—Structure and Activities of Birds; the Relations of Birds to Man; Bird Protection. Structure and Activities of Mammals; the Relations to Man; the Protection and Propagation of Wild Life.

PENMANSHIP—German, Krone's Series; English, Muscular Movement Drill and Ornate Penmanship.

DRAWING—Pencil and Crayon. Landscapes. Figures. Water Colors.

SINGING—Theory and Practice. Vatican Kyriale. Vesperale Romanum.

Third Academic

CHRISTIAN DOCTRINE—Petz, Ecclesiastical Year. The Ecclesiastical Year in general. The three Festal Cycles. Holy Mass. The Sacraments. The Sacramentals. Sacred Cere-

monies and Pious Customs. Sacred Vestments. The Catholic's life and the Ecclesiastical Year. Quarterly Scriptions.

LATIN—Schultz's Grammar and Exercises. Prepositions, Conjunctions. Negative and Interrogative Particles. Syntax: Agreement of Sentences, Use of Cases. Translation and Analysis: Caesar's Gallic War, Book II. Ovid, Selections from *Metamorphoses*. Special attention paid to scanning. Written exercises three times a week. Monthly Scriptions.

GREEK—Kaegi-Kleist's Short Grammar. Regular Verb, Contract Verbs, Numerals, Pronouns, Mute and Liquid Verbs. Verbal Peculiarities. Written exercises three times a week.

ENGLISH—Coppen's Introduction to English Rhetoric. Elements of Composition, Ornaments of Composition, Literary Style. Oral reference made to standard authors. Rules and examples of Rhetorical figures and Punctuation practically shown from Irving's Sketch Book and selected authors. Classics read and analyzed: Irving's Legend of Sleepy Hollow, *The Voyage*; Lowell's Vision of Sir Launfal; models of modern familiar letter writing. Exercises and Compositions. Quarterly Scriptions.

GERMAN—Elemente der deutschen Stillehre. Praktische Uebungen in der Wahl der rechten Worte. Gesetze des Satzbaues und der Composition. Uebertragung von Gedichten in Prosa. Lesung: Lohmeyer's "Geissbub von Engelberg." Aufsätze. Scriptionen.

HISTORY—Ancient History. The Empires of the East—Babylonia, Egypt, Assyria, Persia, China, India, Phoenicia and Palestine. The History of Greece to 146 B. C.—The Prehistoric Age, the Mykenean Age, the Period of Constitutional Evolution and Colonization, the Persian Wars or the Period of Athenian Supremacy. The Peloponnesian War, the Spartan and Theban Hegemony. The Macedonian Period. The Later Greek Kingdoms. Greek Literature and Art. The History of Rome to A. D. 476.—The Peoples of Ancient Italy. The Prehistoric Age. The Founding of Rome. The Earlier Roman Political Organization. Rome a Republic. Democratization of the Constitution. The Conquest of Central Italy (Samnite Wars). The Conquest of Southern Italy (Pyrrhus). The Struggle for the Supremacy of the West (Punic Wars). The Conquest of the East. The Reaction of the Conquest. The Era of Transition or of One-Man Power (Civil Wars).

The Empire. The Decline and Fall of the Empire. Roman Civilization. (Art, Literature).

ALGEBRA—Milne's High School Algebra. Fractions. Simple and Simultaneous Equations. Involution. Evolution. Theory of Exponents. Radical Quantities. Quadratic Equations. Progressions. Logarithms. Permutations and Combinations. Quarterly Scriptions.

PHYSICAL GEOGRAPHY—Dryer's. The Planet Earth. The Land. The Sea. The Atmosphere. Quarterly Scriptions.

FRENCH (optional)—MacMillan's Progressive French Course. I Year. Written Exercises.

DRAWING—Pencil and Crayon. Landscape. Figures.

SINGING—Theory and Practice. Vatican Kyriale. Vesperale Romanum.

Freshman

CHRISTIAN DOCTRINE—Wilmer's Handbook of the Christian Religion. Christian Moral. Basis and conditions of Morality. Moral good and moral evil. Our Duties towards God: Theological Virtues, Virtue of Religion, Direct and Indirect Acts of Divine Worship. The Church as a controller of religious worship. Duties towards Ourselves: health, life, temperance and purity, good name, lawfulness of private property. Duties towards our Neighbor: charity, justice, restitution. Special Duties: parents, children, masters, ecclesiastical and civil authority. Christian Perfection. Holy Eucharist, Penance. Quarterly Scriptions.

LATIN—Schultz's Grammar. Snytax: Agreements of Sentences, Use of Cases. Peculiarities of Snytax. Idioms of Adjectives and Pronouns. Rockliff Exercises written and oral. Translation and Analysis: Cicero, In Catilinam I, II, III, IV. Virgil, Aeneid, Book I. Monthly Scriptions.

GREEK—Kaegi-Kleist's Short Grammar. Verbs in "mi." Primitive or Root Aorists. Mixed Perfects. Irregular Verbs. Translations from Exercise Book II, written and oral. Translation and Analysis: Xenophon, Anabasis, Book II. Scriptions.

ENGLISH—Rhetoric: Theory and Practice of the Chief Species of Composition. Text-Books: Coppen's Rhetoric, Genung and Kavana Practical Handbooks. E. P. Donnelly's Imitation and

Analysis of Narrations and Descriptions. Classics read and analyzed: Longfellow's *Evangeline*, Scott's *Lady of the Lake*, Shakespeare's *Julius Caesar*. The nature and theory of Poetry—Epic, Lyric and Dramatic examined with brief illustrations from the best models.

LITERATURE—The Era of Foundation of English Literature. The Anglo-Saxon, Anglo-Norman and First English Periods. The Renaissance, The Development of the Drama. Shakespeare: Questions, *Julius Caesar* briefly commented. References: Sheran, Long, Gallancz. Compositions. Quarterly Scriptons.

GERMAN—Introduction to German Literature. *Das technische Koennen, die kuenstlerischen Werte*. Bone I. *Lesebuch*. *Homer-Voss, Odyssee*. Exercises and Scriptons.

HISTORY—Sanderson-Hardiman's *Epitome of World's History*. (Same as III Academic. Combined with Sophomore).

GEOMETRY—Wentworth's. Plane: Straight Lines, Angels and Polygons. Proportion and Proportional Magnitudes. The Circle. Problems of Construction. Quarterly Scriptons.

PHYSICS—Hoadley's *Elements*. Physical Forces and Units. Properties of Matter. Mechanics of Solids, Liquids, Gases, Sound, Heat. (Combined with Sophomores).

FRENCH (optional)—MacMillan's *Progressive French Course*, II Year. Written Exercises.

DRAWING—Pencil and Crayon. Landscapes. Figures.

SINGING—Theory and Practice. Vatican *Kyriale*. *Vesperale Romanum*.

Sophomore

CHRISTIAN DOCTRINE—Wilmer's *Handbook of the Christian Religion*. Christian Moral. Basis and conditions of Morality. Moral good and moral evil. Our Duties towards God: Theological Virtues, Virtue of Religion, Direct and Indirect Acts of Divine Worship. The Church as a controller of religious worship. Duties towards Ourselves: health, life, temperance and purity, good name, lawfulness of private property. Duties towards our Neighbor: charity, justice, restitution. Special Duties: parents, children, masters, ecclesiastical and civil authority. Christian Perfection. Holy Eucharist, Penance. Quarterly Scriptons.

- LATIN—Schultz's Grammar. Syntax: Use of Tenses. The Indicative, Subjunctive, Imperative, Infinitive, Participles, Gerund, Supine. Rules and Directions for the Construction of Sentences. Prosody. Rockliff Exercises written and oral. Translation and Analysis: Cicero, Philippica I, IV, IX, De Imperio Cn. Pompeii. Horace: Selected Odes, Epodes, Satires. Written exercises twice a week. Monthly Scriptions.
- GREEK—Kaegi-Kleist's Grammar and Exercise Book II. Syntax Completed. Demosthenes, De Corona, Euripides, Medea. Written Exercises. Scriptions.
- ENGLISH—Oratory: Theory and Rules of Oratory based on Text-Books of Coppens and Schleiniger-Skellon. The Essentials of Argumentation. Illustrations from Standard Speeches. Compositions. Literature: Instruction to Study of American Literature: Brander Mathews, Abernethy, and Long. Selections read. Shakespeare: King Lear analyzed and explained as a Passion Drama. Macbeth read and examined as a study in Construction and Character-Contrast; supplemented by Bradley's lectures, Blackmore and Moulton. Compositions and Exercises. Quarterly Scriptions.
- GERMAN—Deutsche Redekunst. Praktische Einübung des Redeplanes. Studium und Verfertigung geeigneter Reden. Aesthetische Bewertung von Jungfrau von Orleans.
- HISTORY—Sanderson Hardiman's Epitome of World's History. (Same as III Academic. Combined with Freshman Class.)
- GEOMETRY—Wentworth's Book VII: Polyhedrons, Cylinders, and Cones. Book VIII: The Sphere. Quarterly Scriptions.
- PHYSICS—Hoadley's Elements. Physical forces and Units. Properties of Matter. Mechanics of Solids, Liquids, Gases, Sound, Heat. (Combined with Freshman.)
- FRENCH (Optional)—MacMillan's Progressive French Course, III Year Histoire Biblique. Selections from Lafontaine, Pascal, Buffon, Lamartine. Written Exercises.
- DRAWING—Pencil and Crayon. Landscapes. Figures. Water Colors.
- SINGING—Theory and Practice. Vatican Kyriale. Vesperale Romanum.

Philosophical Course

Junior

PHILOSOPHY—Reinstadler, *Elementa Philosophiae Scholasticae*, Vol. I. *Logic*—The Idea: The Idea proper and the term. The Judgment: Kinds and relative properties. The Ratiocination; Rules and kinds of syllogisms; fallacies; method of argumentation; hypothesis. *Criteriology*—Scepticism. Transcendental Idealism of Kant: The “Critique of Pure Reason” (Transcendental Aesthetic, Logic, Dialectic); refutation. Absolute Idealism. Neo-Criticism. Pragmatism: Its theory of knowledge; refutation. Positivism, Agnosticism, Relativism, Traditionalism, Fideism, Dogmatism. The sources of Certitude: Consciousness, sense-perception, intelligence, reason, authority. The Universals. Nature of Truth and Certitude. Science: Rational and experimental method. *Ontology*—Being as such. Notion of Being. First Determination of Being: Act, potency; possibility; essence; existence. The Transcendental Properties of Being; Unum, verum, bonum. The Categories: Substance, accident; personality; quality; relation; causes; the beautiful. *Cosmology*—Corporeal Quantity. Extension. Space and Time. Continuity and quantity; infinite number and magnitude; divisibility of quantity. Corporeal Activity; its existence. The Sensible Qualities. Energy. Finality in Nature. Laws of Nature. The Supreme Causes of the World. Dynamism; Atomism; Hylemorphism. The Universe, Its Creation and Formation. Miracles. Scriptions.

LATIN—Study of words and style. Compositions. Cicero *De Officiis*, Tacitus *dialogus de oratoribus*. Scriptions.

GREEK—Aristotle *Rhetoric*. St. Luke, Gospel. St. Chrysostom: “On the Disgrace of Eutropius.” Plato, *Apology*. Scriptions.

ENGLISH—Connell’s “Study of Poetry.” Definition of Poetry. The Beautiful. Emotion of poetry: nobility, intensity: variety. Imagination in poetry. Imagination and Fancy. Imaginative treatment of poetic subjects. Thought in poetry. Poetic Truth. Idealization. Realism. Medium and Aspects of Expression. The Novel. Its growth and development, nature and purpose. The Idea; the Problems. The Plot; Natural Sequence, technical laws, motivation. Characters:

Kinds, character-development, laws. Characterization: Methods, laws. The Setting: Elements, uses, laws. Forms of Narration. Realism and Idealism. The Short Story: Advantages, limitations, dangers, requisites. Lectures on the Drama. Kinds of Drama. Tragedy: Ancient, modern, romantic. Mediated Tragedy: The drama, piece, emotional drama, melodrama, spectacular and musical drama. Comedy: Ancient and modern classic, comedy of manners, romantic comedy. Elements of a Drama. Theoretical Construction: Requirements and division of the action, scenery effects, function and laws of the acts. Character treatment. Nature and sources of Tragic and Comic effect. Ethics of the Drama. Tennyson's "In Memoriam." Scriptions.

GERMAN—Reuter, *Deutsche Redekunst* Part II. *Skizzen aus der deutschen Literaturgeschichte* II. Goethe's *Faust*. Scriptions.

HEBREW—Vosen, *Rudimenta. De Scriptura Hebraica. De Orationis Elementis. De Etymologia: De Verbo, De Pronomine, De Nomine.* Exercises and Scriptions.

TRIGONOMETRY—Wentworth's *Plane Trigonometry.* The trigonometric functions. Solution of right and oblique triangles. Problems. Outdoor Exercises. Scriptions.

ASTRONOMY—Young's *Elements of Astronomy.* Fundamental Notions and Definitions. Fundamental Problems. The Earth, the Moon, the Sun. Eclipses. Planets in General. Terrestrial and Minor Planets. The Major Planets. Comets and Meteors. The Stars. Constellations. Scriptions.

Senior

PHILOSOPHY—Reindstadler, *Elementa Philosophiae Scholasticae*, Vol. I. (Combined with the Junior Class). Graduation Essays were as follows: Are Sense-Qualities Objective?; An Infinite Causal Series; The Descent of Man from Apes; Christian Persecutions; Tennyson at Hallam's Death; Determinism; Finality of Corporeal Activity. Scriptions.

HISTORY OF PHILOSOPHY—Coppens'. *Pre-Christian Philosophy.* Eastern Nations: India (Brahmanism, Buddhism, Theosophy), Persia, China, Egypt and West Asia. Greek Philosophy: Ionians, Pythagoreans, Eleatics, Sophists; Socrates, Plato, Aristotle; Stoicism, Epicurism, Scepticism, Eclecticism. Roman and Alexandrian Philosophy. *Chris-*

tian Philosophy. Patristic Philosophy. Medieval Philosophy, Christian, Jewish, Arabian Philosophy; Bl. Albertus Magnus, St. Thomas Aquinas, St. Bonaventure, Duns Scotus. Decline of Scholasticism. *Modern Philosophy.* Des Cartes, Spinoza; empiricism, idealism, pan-phenomenalism. From Kant to present time: Kant and German Philosophy; Scottish, French, English, American, Italian, Spanish Philosophy. Neo-Scholasticism.

ECCLESIASTICAL HISTORY—Birkhaeuser. Part I. Christian Antiquity. The founding and spreading of the Church. The conflict between Christianity and Judaism. The bloody and scientific opposition of Paganism to the Church. Development of dogma, heresies, schisms and controversies. Catholic literature. Cult, clergy and discipline. Part II. The Middle Ages. The Migration of the barbarian nations and their conversion. The rise of Mohammedanism. The founding of the Papal States. The restoration of the Western Empire. Church and State in Western Europe. Feudalism and the papacy. Scriptures.

INTRODUCTIO—Cornely-Hagen's. *General Introduction* to Holy Scripture. Biblical Canonics, Textual Criticism, Sacred Hermeneutics. *Special Introduction:* The Historical Books of the New Testament; Review of the Didactic and Prophetic Books. The Gospels. Reference: Breen, Gigot, Kaulen, Messmer's Outlines and the Catholic Encyclopedia.

ENGLISH—Tennyson's "In Memoriam." Scriptures.

GERMAN—Skizzen aus der deutschen Literaturgeschichte II. Goethe's Faust.

HEBREW—Vosen Rudimenta. De Particulis. De Syntaxi Nominum. De Syntaxi Particulorum. Selections from Holy Scripture. Scriptures.

BOOKKEEPING—Kaib's "Bookkeeping for Parish Priests." Lectures on Commercial Law.



ENTERTAINMENT

Reception Tendered Our Most Rev. Archbishop,
Sebastian G. Messmer, D. D.,
Oct. 15, 1917.

1. OVERTURE, "Debutante" *S. L. C. Band*
2. SONG, "Gott in der Natur" *Fratres Choir*
3. LATIN ADDRESS *M. Kelnhofer*
4. "MARY EMERSON WALTZES" *S. L. C. Orchestra*
5. Song, "AVE MARIA" *Selected Choir*
6. MARIMBA SOLO WITH ACCOMPANIMENT, "Aloho
Oe" *E. Westenberger*
7. DECLAMATION, "Hiawatha" *J. Whittle*
8. "UNDER THE BANNER OF VICTORY"
..... *S. L. C. Orchestra*
9. SONG, "EVENING" *S. L. C. Choir*
10. TRIO, "GRANDMA" .. { *Violins, Prof. A. Staeger, F. Rauch.*
 { *Piano J. Whittle*
11. "THE EDITOR'S TROUBLES."

FARCE IN ONE ACT.

CHARACTERS.

- EDITOR *Alphonse Schuh*
OFFICE BOY *Edwin Allman*
SAM PALMER *Chester Dionne*
WASHINGTON JONES *Robert Feehan*
JIM BLOODSO *John Feest*
TONY CARUSO *Raymond Derrick*
12. TRIO, "Auf Bergeshoeh" { *Piano.....Frater George*
 { *Flute.....Frater Dionys*
 { *Violin.....Frater Albert*
- FINALE, "New Hartford" *S. L. C. Band*



THANKSGIVING DAY

The Black Arrow

Drama in Three Acts

Presented by the St. Thomas Literary Society

DRAMATIS PERSONAE

Richard, Duke of Gloucester.....		Arnold Wibbert	
Harold, Duke of Shoreby.....		Francis Egel	
Sir Daniel Brackley.....		John Feest	
Sir Oliver Groat, brother of Sir Daniel.....		Michael Kelnhofer	
Dick Shelton, ward of Sir Daniel.....		Edwin Allman	
Hal Erwin, kidnapped by Sir Daniel.....		James Burke	
Thor, spy and court jester.....		Joseph Whittle	
Master of Revels.....		Raymond Derrick	
Ned Harkins. }	Pages of Duke Shoreby	{ William Holzemer	
Nat Evelyn, }			Charles Havlick
Nick Semel, }			William Braun
Kit Marston, Squire of Duke Shoreby.....		Joseph Michels	
Swinton Lawson, }	Men of Sir Daniel	{ Edward Gocker	
Bennet Bowyer, }			Herman Miller
Goffe Carter, }			John Vesely
Gurston Dickon, }			John Schuster
Barton, sentinel of Sir Daniel.....			Clarence Dickopf
Condall, a peasant of Kettley..		Clarence Davenport	
Host of Kettley Inn		Edward Westenberger	
Ellis Duckworth, master of the Black Arrow..		Lucian Lauer mann	
Will Lawless, }	Men of the Black Arrow	{ Chester Donne	
Greensheve, }			Henry Frank
Buckston, }			Herbert Bube
Thornwood, }			James Feider
Thromorton, }			Robert Feehan
Huntley, sentinel, }			James Mlsna
Messenger.....		Charles Seeberger	
Huntsmen, Soldiers, Pages, etc.			

PROGRAM OF MUSIC

Overture, "Symbol of Honor".....	W. L. Skaggs, S. L. C. Band
"Expectancy," Norman Leich.....	S. L. C. Orchestra
"Grandfather's Clock," Louis Castle.....	S. L. C. Orchestra
"Mississippi Volunteers," Geo. L. Cobb.....	S. L. C. Band
"Mary Emerson Waltzes," F. H. Losey.....	S. L. C. Orchestra
Finale, "The American Soldier," G. Rosenkranz...	S. L. C. Band

THE CHORISTERS' CHRISTMAS-EVE

December 20, 1917.

Presented by

The Members of St. Lawrence Literary Society.

PROGRAM.

CAST OF CHARACTERS.

AMBROSE GRAY, Leader of the Waits.....	<i>H. Maurer</i>
FRANK HANLON, Pursebearer.....	<i>O. Champagne</i>
TOM BRENNEN, Commissary.....	<i>R. Losleben</i>
FR. JOHN DESMOND, Pastor.....	<i>H. Sellen</i>
FR. BROWN, From the College.....	<i>J. Pfister</i>
RICHARD CLARE, A Wealthy Merchant.....	<i>H. Pick</i>
KEVIN, His Son.....	<i>P. Henrichs</i>
MR. WYNNE, Music Teacher to Kevin.....	<i>H. Sellen</i>
DOMINIC MOORE, A Poor Man.....	<i>L. Toohey</i>
OWNY, His Son.....	<i>J. Konz</i>
MR. TALLIS, A Friend of Clare.....	<i>L. Schoofs</i>
MR. KELLY, A Friend to Moore.....	<i>E. Wagner</i>
DAN MALONE, Servant to Fr. John.....	<i>J. Martins</i>
GABE JACKSON, Servant to Mr. Clare.....	<i>B. Adomaitis</i>
JACK, One of Owny's Chums.....	<i>E. Hesprich</i>
ROWEN, Another Chum of Owny.....	<i>J. Windt</i>
WAITS: F. Rauch, J. Becker, A. Cramer, J. Kraus, A. Hoffmann, H. Schmitz, H. Heckler, A. Heisen.	
BOYS' CHOIR: A. Jost, R. Greuel, F. Falque, H. Gerlemann.	

PROGRAM OF MUSIC.

"Shadow Time" ... Chas. Johnson.....	S. L. C. Orchestra
"Andante Cantabile" ... Heschna.....	S. L. C. Orchestra
"The Alpine Shepherd" ... M. Schulken.....	S. L. C. Orchestra
"Apple Blossoms" ... A. Roberts.....	S. L. C. Orchestra
"Song of the Shepherds" ... Prof. A. Staeger..	S. L. C. Orchestra

SHROVE TUESDAY

February 12, 1918

Der gescheidt'ste Schwabenstreich

PERSONEN

Klumpumpel Bucklich.....	P. Baatz	
Buergermeister.....	} Schwaebischer Stadtrat. {	
Flederwish.....		E. Wagner
Langnase.....		H. Maurer
Spitzkopf.....		.J. Pfister
Baeuchle.....		L. Schoofs
Federle.....		.J. Binder
Plemperle.....		..F. Rauch
Ferdinand, Koenig von Spanien.....	.C. Becker	
Caballero, Hoefling.....	H. Pick	
Herold.....	J. Moeder	
Pagen.....	O. Cramer	
Hoeflinge.....	T. Keaveny, E. Sweigart	
Indianer-Haeuptling.....	L. Debes, B. Fries, A. Zuern	
Matrosen.....	M. Bodinger	
Indianer.....	L. Gutowski, W. Beran	
.. A. Poeckes, W. Wagner, E. Stoegbauer, A. Heisen, J. Kraus		
Spanier.....	A. Reinig, A. Cramer, B. Wildenborg, F. Mlsna	
Onkel Sam.....	L. Toohey	
Soldaten.....	L. Beine,	
.. P. Henry, L. Scholzen, J. Perl, G. Schuh, H. Schlingen		
Postbote.....	L. Gerlemann	
Philosoph.....	L. Sellen	
Dr. Ironbeard.....	J. Becker	
Vetter Michel.....	J. Stammeyer	
Polizist.....	G. Hardesty	
Kutscher.....	A. Hoffmann, B. Adomaitis, G. Sonnen	
Neger.....	M. Bauer, J. Smith, P. Coffey	
Zeitungs-buben.....	P. Henrichs, A. Jost	
Plattdeutscher.....	H. Heckler	

PROGRAM OF MUSIC

1. Overture, "Haut Monde," H. A. Vandercook...S. L. C. Band
2. Waltz, "Revel of the Roses," Walter Rolfe.....S. L. C. Band

3. March, "The Commander," Wullen.....S. L. C. Band
4. "Melody in F," A. Rubinstein.....S. L. C. Band
5. Medley Overture, "Gems from the Operas,"
E. W. Berry.....S. L. C. Band
6. Galop, "Round the Ring," Thos. S. Allen.....S. L. C. Band
7. Serenade, "In Twilight's Witching Hour,"
D. W. Phillips.....S. L. C. Band
8. "Aloha Oe," Queen Liliuokalani.....S. L. C. Band
9. Finale, "National Emblem," E. E. Bagley.....S. L. C. Band

RECTOR'S DAY

PART I

April 29, 1918.

1. "Ben-Hur Chariot Race" ..Paull.....*S. L. C. Band*
2. Medley Quartet. .H. White*Fratres' Choir*
3. "Flowers and Ferns..Trio.....
Flute, Fr. Dionys; Clarinet, Fr. Seraphin; Piano, Fr. George
4. Congratulatory Address*M. Kelnhofer*
5. "Hungarian Dance" ..Brahms.....*S. L. C. Band*
6. "Empire Express" ..L. Lincoln.....*S. L. C. Orchestra*
7. "Rustle of Spring" ..Piano Solo.....*C. Dickopf*

8. HE WOULD BE A LORD

Comedy in Two Acts.

CAST OF CHARACTERS.

Daniel Jourdain—Who would be Noble.....*A. Wibbert*
 George Jourdain—His Bourgoise Brother.....*E. Kaemmerling*
 Music and Dancing Masters.....*J. Kalisek, P. Meyer*
 Fencing Master*H. Hoffmann*
 Doctor of Philosophy *.....*F. Gruenheck*
 Tailor*R. Derrick*
 Count Dorante*F. Egel*
 Nicholas—Servant of D. Jourdain.....*A. Madel*

Footmen and Apprentices

9. Between the Acts
 - a) "L'Eclair".....Violins: F. Rauch, G. Vander Becken;
Piano: J. Whittle; Flute: Fr. Dionys
 - b) Selections from Lohengrin..*F. Rauch, G. Vander Becken*

- c) "Marguerite" . . Waltz . . Faust *S. L. C. Orchestra*
 d) "Flag of Freedom" . . Herbert *I Choir and Orchestra*
 10. Presentation of NAMEDAY-GIFT *P. Sturm*
 11. "The Troubedour" . . Meyers *S. L. C. Band*
 12. Response of Father Rector
 13. "Hail Uncle Sam" . . Weber *S. L. C. Band*

PART II

April 30, 1918.

"BROTHER AGAINST BROTHER"

A Drama in Five Acts.

CAST OF CHARACTERS

Sir Christopher Parse, of Crowlogue	<i>Alph. Schuh</i>
Rancklyn, } His Sons }	<i>Jos. Whittle</i>
Donal } }	<i>John Feest</i>
Brian O'Hara, Friend of Donal	<i>James Burke</i>
Skelton McClutchy, Solicitor	<i>Lawr. Loerke</i>
Darby Darrell, Accomplice of Rancklyn	<i>L. Lauerman</i>
Paudeen Devine, a Miser	<i>Edw. Allman</i>
Ralph Remington, Detective	<i>Chest. Dionne</i>
Solomon Cheatheim, Money Lender	<i>James Feider</i>
Maurice Burke, Official of the Land League	<i>Henry Maurer</i>
Mortimer, Constable	<i>Wm. Holzemer</i>
Phelim, Newsboy	<i>Max Bauer</i>

MUSICAL PROGRAMME.

- Overture—"Jolly Robbers" . . Suppe *S. L. C. Band*
- March—"On Guard" . . Losey *S. L. C. Orchestra*
- Overture—"Poet and Peasant" . . Suppe *S. L. C. Orchestra*
- "Simple Aevu" . . Thome *S. L. C. Orchestra*
- "A Summer Night in the Catskill Mountains" . . Moquist
 *S. L. C. Orchestra*
- March—"From the West" . . Woods *S. L. C. Band*
- Déscriptive—"A Summer in Hawaii" . . Wheeler
 *S. L. C. Band*
- Finale—"United America" . . Weber *S. L. C. Band*



ROBERT J. HOFFMAN



ARNOLD J. EISENHART



JOSEPH C. KALESKE



REV. P. SCHRÖDER, PASTOR



FRANCIS S. GREENBECK

1918

S
IN
D

Our
in
Album



REV. DELBRIDGE PAUL, PASTOR



ERIC C. KALLENBERG



MR. CARL E. RICHARDSON



PETER F. MEYER

OUR GRADUATES

CONTEST IN ELOCUTION

May 5, 1918.

1. VIOLIN SOLO, Adagio from "Moonlight Sonata"—
 Beethoven *F. Rauch*
 "The Idiot" *C. Davenport*
 "The Two Pictures" *J. Schuster*
 "Keenan's Charge" *F. Michels*
 "Kissing Cups Race" *E. Allman*
2. MARIMBA SOLO, "My Regards"—Llewellyn.....
 *E. Westenberger*
 "The Painter of Seville"..... *F. Egel*
 "Our Folks" *L. Loerke*
 "The Last Days of Herculaneum"..... *H. Hoffmann*
 "The Vision" *M. Kelnhofer*
3. VIOLIN DUET, Selection from La Dame Blanche,—
 Boieldieu *F. Rauch, G. VenderBecken*
 "Erin's Flag" *P. Coffey*
 "The Soul of the Violin"..... *P. Henry*
 "Sergeant Prentiss' First Plea"..... *L. Toohey*
4. BARITONE AND TROMBONE DUET, Sextet from
 "Lucia di Lammermoor"—Donizetti...*J. Kalisek, A. Schuh*
 "Smiting the Rock" *J. Becker*
 "Lasca" *H. Maurer*
 "The Chariot Race" *E. Wagner*
5. FINALE, "Hungarian Dance"—Sharwenka.....*J. Whittle*
 Judges: Rev. Maurus Ascherl, O. M. Cap.; Rev. Celestine
 Bittl, O. M. Cap.; and Prof. A. Zavadil, Milwaukee, Wis.

COMMENCEMENT EXERCISES

June 5, 1918

Overture, "Poet and Peasant," Suppe.....	<i>S. L. C. Band</i>
The Descent of Man from Apes.....	<i>P. F. Meyer, '18</i>
Marimba Solo, "Overture Raymond," Thomas..	<i>E. J. Westenberger</i>
An Infinite Causal Series.....	<i>M. J. Kelnhofer, '18</i>
"Jolly Robbers," Suppe.....	<i>S. L. C. Band</i>
Tennyson at Hallam's Death.....	<i>E. C. Kaemmerling, '18</i>
Violin Duet, "Selections from Le Dame Blanche"	
.....	<i>F. Rauch and G. Vander Becken</i>
Christian Persecutions.....	<i>H. J. Hoffmann, '18</i>



AWARDING OF PRIZES

Conferring of Degrees

Valedictory.....	<i>A. J. Wibbert, '18</i>
"Light Cavalry," Suppe.....	<i>S. L. C. Band</i>

Baccalaureate Address

Rev. U. E. Mueller, C. PP. S., Fond du Lac, Wis.

Finale, "Columbia's Call," Wyman.....	<i>S. L. C. Band</i>
---------------------------------------	----------------------



GRADUATES OF 1918

GRUENHECK, FRANCIS.....	<i>Fond du Lac, Wis.</i>
HOFFMANN, HERBERT.....	<i>Marathon, Wis.</i>
KAEMMERLING, ERICH.....	<i>Milwaukee, Wis.</i>
KALISEK, JOSEPH.....	<i>Shawano, Wis.</i>
KELNHOFER, MICHAEL.....	<i>Blenker, Wis.</i>
MEYER, PETER.....	<i>Almena, Wis.</i>
WIBBERT, ARNOLD.....	<i>Milwaukee, Wis.</i>

—AWARDS—

A Gold Medal for excellence in English Composition-writing was awarded to:

ARNOLD WIBBERT

Distinguished:

ALPHONSE SCHUH
EDWIN ALLMAN

Donor:

St. Lawrence College Alumni Association

ELOCUTION.

St. Thomas Literary Society

Gold Medal:

EDWIN ALLMAN

Distinguished:

M. KELNHOFER
L. LOERKE

Donor:

Our Sunday Visitor, Huntington, Indiana

St. Lawrence Literary Society

Gold Medal:

HENRY MAURER

Distinguished:

L. TOOHEY
J. BECKER

Donor:

Rev. H. B. Kramer, Pokahontas, Iowa

THE CHRONICLE OF THE YEAR

OPENING OF NEW TERM.

The blessing of the Holy Ghost was invoked on our new scholastic year on Sept. 6th, with a Solemn High Mass celebrated by the Rev. Rector. Fr. Salesius, O. M. Cap., and Rev. Wildenborg assisted as Deacon and Subdeacon respectively. The classes were resumed at 9:15. The Staff of Professors was the same as the foregoing year. Some of the class-rooms were rather crowded on account of the large number of Scholastics.

In order to infuse the year with a spirit of piety the Spiritual Exercises are held soon after the opening. This year's Retreat commenced Sunday evening, Sept. 30th. The students were agreeably surprised to find that the Very Rev. Father Provincial was the Retreat Master. All his instructions were both interesting and helpful. The solemn close took place on the morning of the Feast of St. Francis.

MR. RAUPERT'S VISIT.

When it became known that Hon :Godfrey Raupert, K. S. G., the well-known lecturer on Spiritism, was to visit us, great expectations were entertained by the students. Mr. Raupert gave two lengthy lectures to the higher classes on the very important subject, Oct. 7th and 8th. The clear expositions of this authoritative lecturer were highly appreciated and will no doubt bring the desired effects at the right time.

A GALA DAY.

October 16th. On the eve of this day our beloved Archbishop, The Most Reverend Sebastian G. Messmer, D. D., arrived on the Mount after the administering of Confirmation at our Missions of St. Cloud and St. Joseph. The students tendered him a hearty welcome in the St. Thomas Hall. His Grace was highly pleased with the program and so expressed himself.

The next morning he assisted "in cope" at the Solemn High Mass in the parish church. Father Provincial, the Celebrant of the Mass, was assisted by Fr. Boniface and Fr. Thomas. Fr. Corbinian was Assistant Priest to His Grace, while Fr. Guardian and Fr. Rector were Honorary Deacons. After Mass His Grace confirmed seven students, and then addressed them, urging devotion

to the Holy Ghost as a requisite for fostering the life of the soul in a special manner, because it is so very important for candidates to the holy priesthood. In procession we then proceeded to the new Scholastic building, which was solemnly dedicated. This edifice is indeed an ornament to the hill. It is occupied by the candidates of our Order. Here they are to receive the first principles of the religious life, while attending classes at the college during the III Academic, Freshman and Sophomore classes. May it be a harbor from the world's wild waters for many a candidate to the holy priesthood! Honorary guests for the occasion were the Revs. Mueller, C. PP. S., Daniels, Darnieder, Koelzer, Muckerheide and Scheyer.

FATHER GUARDIAN'S NAMEDAY.

Since much of the responsibility of good management on the Mount falls on Rev. Pacificus Raith, O. M. Cap., as Guardian of the Monastery, it is but just that his Nameday be celebrated in a special manner. For this reason the students assembled in the Hall Sunday, Sept. 23d, with the members of Holy Cross parish, and helped in the delightful program of the school children giving expression to their gratitude. On the Nameday itself, Sept. 25th, a holiday was granted to the students.

ST. LAWRENCE DAY.

The patronal Feast of our College was celebrated Nov. 13th. Rev. F. Jansen, President of the Alumni Association, and Rev. F. Kleser, the Secretary and Treasurer had come for the celebration. The former pronounced the eulogy, in the course of which he spoke of the Thabor of the priest in the confessional, in the pulpit and on the altar. The latter had the High Mass, at which he was assisted by Fr. Boniface as Deacon and Fr. Maurus as Subdeacon. Mr. Griffith, the well-known Shakespearean Reader, pleased us in the afternoon with the rendition of Julius Caesar and several short selections.

THANKSGIVING DAY.

We consecrated the morning of this day to thanksgiving towards the Almighty by a High Mass, the prayers prescribed for our Archdiocese and Benediction of the Blessed Sacrament. Father Provincial sang the High Mass. Fr. Rector was Deacon, Fr. Theodore Subdeacon.

"The Black Arrow" is the title of the drama rendered that afternoon by the St. Thomas Literary Society. The hearty ap-

plause of the audience that crowded the Hall and the unstinted praise of such who are capable of judging attest to the fact, that the students are becoming quite proficient in vocal expression. This is due in no small degree to Prof. Anthony Zavadil, who comes from Milwaukee every month for the purpose of instructing the students in the art of expression. Honorary guests for this occasion were the Revs. Looze, Leitner, R. Kramer, Roder, Elsingher, Herb, Schmitt, Maxmilian Walz, C. P. S., Hugo Lear, C. P. S., Ludger, O. M. Cap., Theophilus, O. M. Cap. We spent an agreeable evening in the Hall with a sociable, during the course of which several reels of moving pictures were shown and amusing selections were given by the students.

THE CHRISTMAS PLAY.

Instead of the usual Christmas Musicale our Juniors presented a play full of Christmas spirit entitled "The Choristers' Christmas Eve." Their earnest endeavors were crowned with success and they received a goodly amount of praise. The old and venerable Carols instilled into our hearts the spirit of the holy season. The next morning, December 21st, the students, with the exception of twelve, left for their vacation. This was the smallest number we have had during the Christmas season in many years. Soon after Christmas they were invited to Dotyville, and there feasted at the expense of Rev. R. Kramer, a friend of the boys.

EXAMINATIONS.

The oral mid-year examinations were conducted under the presidency of Very Reverend Father Provincial, Rev. Benno, O. M. Cap., and Rev. Pacificus, O. M. Cap. These trials of the students commenced January 23d, and were closed January 25th, with a few appreciative words of Father Provincial. On one of the evenings he also showed very interesting stereopticon views of Rome and Venice and explained them according to his observations, when he traveled to Rome some years ago. We are sorry that he cannot find time to tell us about his trip more frequently.

SHROVE TUESDAY.

Since circumstances hindered the older students from having the play on Shrove Tuesday, the members of St. Lawrence Literary Society took this responsibility upon themselves. They performed the German Comedy "Der Gescheidt 'ste Schwabenstreich" with marked success before a large, appreciative audience. That

evening the students of the higher classes greatly amused us with a minstrel show. "The Elite Orchestra," specially selected for the occasion, furnished the music to the satisfaction of all.

FEAST OF ST. THOMAS.

Because St. Thomas Aquinas is patron of schools, we celebrated his feast, March 7th, in a fitting manner. During the 6 o'clock Mass the members of St. Thomas Literary Society received Holy Communion from the hands of their Rev. Director, Fr. Salesius. At 8 o'clock Fr. Thomas celebrated the High Mass, at which Fr. Roger assisted him as Deacon and Fr. Victor as Sub-deacon. Fr. Leo pronounced the eloquent panegyric.

EASTER MONDAY.

No regular Easter vacation is given; but the good people of St. Cloud and their pastor, Fr. Camillus, O. M. Cap., extended an invitation to the students for Easter Monday. On the morning of that day the students marched to Calvary station and gave a surprise to the conductor of the "Calvary Flyer" by crowding into the two coaches. Arriving at St. Cloud they marched through the thriving village up to the school. They were welcomed with a dinner and showed their appreciation for this act of hospitality. At 1 o'clock they presented a minstrel show as a token of gratitude for the kindness of the St. Cloud parishioners.

RECTOR'S DAY.

April 30th was a day of rejoicing for the students, because they could show their gratitude towards Fr. Rector, this being his Nameday. The evening before the feast they invited him to the Hall, where they had prepared a program in his honor. Fr. Salesius welcomed him. Mr. M. Kelnhofer expressed the congratulations of the students and gave the Spiritual Bouquet. The Comedy "He Would Be a Lord" was then presented. Next P. Sturm presented the Nameday gifts: a pair of Standing Angels for the High Altar, a beautiful picture of the Sacred Heart for Fr. Rector's study, and some records for the Edison. The program was interspersed with musical selections, artistically rendered, for our Band and Orchestra have exceeded our fondest expectations. At the close of the program Father Rector expressed his heartfelt thanks and told the students how gladly he was working for them.

On the morning of the feast Father Rector celebrated the

High Mass. Rev. H. Kramer, who had come from Iowa for the celebration, assisted as Deacon and Fr. Josaphat, O. M. Cap, from Appleton, was Subdeacon. Benediction of the Blessed Sacrament concluded this church service. At 2 p.m. we again assembled in the St. Thomas Hall to attend the play "Brother Against Brother." The performance was indeed worthy of the day's celebration. The day was closed with a sociable, at which moving pictures were shown. Rev. F. Kleser and Rev. H. Kramer gladly responded to the invitation of addressing the boys and they received hearty applause. Other guests were the Revs. Leitner, R. Kramer, Herb, Huhn, Schmitt, Lehwald, Huepper, Ludger, O. M. Cap, and Josaphat, O. M. Cap.

MAY DAY.

The weather of the foregoing days did not justify us in expecting a clear sky. But the first day of Mary's month dawned bright and beautiful. We commenced the day with a High Mass celebrated by Rev. Kleser, Secretary and Treasurer of the Alumni Association. Rev. H. Kramer and Fr. Ignatius, O. M. Cap., missionary of the Caroline Islands, assisted. After the Mass Fr. Nerius, O. M. Cap, Director of the Scholasticate, preached on the text: "Beatam me dicent omnes generationes." The procession was then formed and moved to the shrine at the end of the campus and the statue of the Blessed Virgin was there enthroned, to remain till autumn. The first May devotion was held, as it is done every day during the month. We then repaired to the Chapel for Benediction of the Blessed Sacrament.

For the afternoon a special celebration had been arranged. To the strains of music two pennants—one of the United States, the other of the Alumni Association—were carried to the new baseball diamond at the foot of the hill. They were blessed and raised to their places with appropriate ceremonies. Mr. J. Feest, manager of the Athletic Association, thanked the Alumni and the Faculty of the College for the pennants and especially for the new baseball grounds and urged the students to actively participate in all outdoor sports at the right time in order to become physically fit to follow their vocation. Rev. F. Kleser enlarged on the words of the student and then referring to the pennant of our Country, spoke enthusiastically on true patriotism. After this a sharply contested game of baseball between the members of the Band and the other students helped to enliven the rest of the afternoon.

ACKNOWLEDGMENTS

Most cordial thanks are tendered by the Institution to its benefactors during 1917—1918.

Contributions for Indigent Students, to the Chapel, Library and Museum are always accepted from Alumni and other friends with sincerest thanks.

Friends: An Edison Victrola, value \$100.00.

Students: 75 Edison, Victor and Columbia Records.

Students: Large Sacred Heart Picture framed for the Rev. Rector's Studio.

Sisters of St. Agnes' Hospital, Fond du Lac, Wis., an X-Ray Tube, 6 X-Ray Plates.

For Indigent Students.

The St. Lawrence College Alumni Association founded a second scholarship in honor of St. Francis and St. Bonaventure.

Rev. N., a burse of \$1000.00.

Rev. Chas. F. Marshall, by Bequest, \$500.00.

St. Michael's Congregation, St. Michael's, Wis., \$100.00.

Mrs. C. Dirkes, by Bequest, \$662.47.

A Benefactress, \$150.00.

Rev. N., \$10.00.

Rev. N., \$10.00.

Rev. N., \$20.00.

Mr. Math. Thul, St. Michael's, Wis., \$5.00.

To the Chapel.

Students: 2 Statues Standing Angels, 4 Cassocks.

A Benefactress: 4 Lace Surplices.

Mrs. H. Bauer, Manitowoc, Wis., 6 Bouquets Artificial Flowers.

To the Library.

Capuchin Monastery, Mt. Calvary, Wis., Messages and Papers of the Presidents, 20 vols.

Students: 10 vols.

Mr. H. Bauer, Manitowoc, Wis., "Master in Art," 3 vols.; "Castles of France," 1 vol.; "Laboratory Guide in Zoology," 1 vol.; "The Study of Animals," 1 Vol.

Mr. A. J. Walser, "City of God," 1 vol.; "Leben Mariae," 1 vol.

Mr. C. Thienel, 1 vol.

The various departments of the National Government at Madison, reports, documents and maps.

Hon. J. H. Davidson, M. C., The Congressional Records, Farmer's Bulletins, Geological Buulletins.

To the Museum.

Capuchin Father—Caroline Islands Mission—Axe made from Sea-Shell; 3 garments worn by the natives made from the threads of the Banana-Plant; a bamboo case containing flint and tinder for striking fire; belt made of ground sea—and tortoise-sheel; head-ornaments made from the wood of the Mangroove tree and from the banana-plant, and other ornaments used at their dances; ear-ring composed of many rings made of cocoanut-shell; bracelets made from tortoise-shell; a cockle-shell; a genuine peal from the South Sea.

Capuchin Monastery, Detroit, Mich., Precious Wood Carvings, Stamp Collection.

Dr. J. M. Baasen, Mt. Calvary, Wis., valuable coins, cotton and peanut growth from Texas.

Mr. C. Thienel, a Soldier cap.

Mr. H. Bauer, Manitowoc, Wis., old and valuable coins.

Mr. L. Brielmaier, Milwaukee, Wis., old-style tin snuf-box with oil painting on cover, rosary made of bone-rings.

Mr. A. Schmitz, Mt. Calvary, Wis., Indian Arrow-Spear of Copper.

Mr. N., New York, Time-Fuse of a Shrapnel.

Mr. J. Henry, Kenosha, Wis., an A. O. H. Parade Sword.

Mr. William Fuchs, Brooklyn, N. Y., Rare Domestic and Foreign Stamps.

L. J. Boecher, Student, Bayonet made from a gun to be used in the Civil War.

L. Lauermann, L. Beine, Students, valuable coins.

W. Braun, Student, Exhibit of the Process of making Aluminum.

J. Kalisek, Student, Indian Relics.

LIST OF ALUMNI

Scholastics

BARTH, ANTHONY	III Academic
BAUMGARTNER, APOLLINAR	Freshman
BOURSY, CHRISTOPHER	Sophomore
BOYLE, EUSEBIUS	Freshman
BRIELMAIER, ERHARD	III Academic
BUSS, HERMAN	Freshman
BUTLER, JUSTINIAN	III Academic
Cloidt, Luke	III Academic
GIBSON, PAULINUS	Freshman
GUNDERMANN, ROBERT	III Academic
HOLDEN, GEORGE	III Academic
JOOS, ROMUALD	Freshman
KNOELLER, CLAUDE	III Academic
KOBEL, JEROME	III Academic
KRIEG, DIDACUS	III Academic
McCARTHY, PATRICK	III Academic
MANZO, MARCELLUS	Freshman
MATCHEKOSKI, AMBROSE	III Academic
MATCHEKOSKI, STANISLAS	Freshman
MEHLIG, GERHARD	III Academic
MORRISON, ALBERT	Freshman
MOSER, MARK	III Academic
MUELLER, URBAN	Freshman
MURRAY, CASIMIR	Sophomore
NIEDHAMMER, COSMAS	III Academic
NIEDHAMMER, DAMIAN	III Academic
OTTIS, DANIEL	III Academic
OWERMOHLE, POLYCARP	Freshman
POEPPPEL, RAPHAEL	III Academic
RASCHER, EUGENE	Freshman
SCHABESKY, CORNELIUS	III Academic
STIER, DIONYS	Freshman
STIPPICH, CALLISTUS	Sophomore
STIPPICH, FERDINAND	III Academic
STROBEL, ROMAN	Sophomore
ULZHEIMER, ALPHONSE	III Academic
USSARIO, JAMES	III Academic
WINTERROTH, SERAPHIN	Sophomore

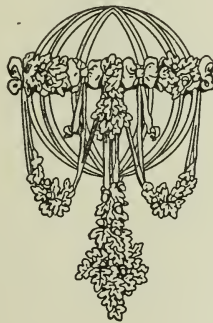
Students

ADOMAITIS, BENEDICT	I Academic
ALLMAN, EDWIN	Sophomore
BAATZ, PETER	III Academic
BARTHELEMY, DOMINIC	Freshman
BAUER, MAX	III Academic
BAUMHOVER, IVO	I Academic
BECKER, CLARENCE	III Academic
BECKER, JOSEPH	II Academic
BEINE, LOUIS	I Academic
BERAN, WENZEL	II Academic
BINDER, JOHN	I Academic
BINDER, LEO	Freshman
BODINGER, MATHIAS	II Academic
BOECHER, JOHN	Junior
BOSHOLD, PAUL	III Academic
BOURASSA, JOSEPH	Sophomore
BRAUN, WILLIAM	Freshman
BUBE, HERBERT	Freshman
BURKE, JAMES	Freshman
CHAMPAGNE, OMER	III Academic
COFFEY, PATRICK	I Academic
COURTEAU, JORDAN	I Academic
CRAMER, ARTHUR	II Academic
CRAMER, OSCAR	II Academic
DALEIDEN, JOHN	Freshman
DAVENPORT, CLARENCE	Freshman
DEBES, LEO	II Academic
DERRICK, RAYMOND	Freshman
DICKOPF, CLARENCE	Sophomore
DIONNE, CHESTER	Junior
EGEL, FRANK	Junior
ESSER, IVON	Sophomore
ESSER, WINAND	I Academic
FALQUE, FERDINAND	I Academic
FEEHAN, ROBERT	Freshman
FEEST, JOHN	Junior
FEIDER, JAMES	Freshman
FRANK, HENRY	Freshman
FRIES, BERNARD	II Academic
GERLEMANN, LOUIS	II Academic

GERLEMANN, HUGO	I Academic
GOCKER, EDWARD	Sophomore
GREUEL, RAYMOND	I Academic
GRUENHECK, FRANCIS	Senior
GUTOWSKI, LEON	II Academic
HAAS, RAPHAEL	I Academic
HALBACH, FLORIAN	Freshman
HARDESTY, GILBERT	II Academic
HARGARTEN, LEO	I Academic
HAVLICK, CHARLES	Sophomore
HECKLER, HERBERT	III Academic
HEISEN, ADOLPH	II Academic
HENRICH, PAUL	I Academic
HENRY, PATRICK	I Academic
HESPRICH, ELEUTHERIUS	I Academic
HOFFMANN, HERBERT	Senior
HOFFMANN, JOHN	Sophomore
HOFFMANN, ANDREW	III Academic
HOLZEMER, WILLIAM	Freshman
JOST, ALOYS	I Academic
JURICEK, JOHN	Sophomore
KAEMMERLING, ERICH	Senior
KALISEK, JOSEPH	Senior
KEAVENY, THOMAS	II Academic
KELNHOFER, MICHAEL	Senior
KERN, CLEMENS	Freshman
KONZ, JEROME	I Academic
KOPF, HUGO	Junior
KOSACK, WILLIAM	I Academic
KRAUS, JOSEPH	II Academic
KREMER, MICHAEL	Sophomoré
KUENNEN, ALBERT	I Academic
KUNKEL, ALBERT	Sophomore
LANGENFELD, NICHOLAS	III Academic
LAUERMANN, LUCIAN	Freshman
LOCKTHOWE, JOS.	III Academic
LOERKE, LAWRENCE	Junior
LOSLEBEN, ROMAN	III Academic
MADDEL, ANTHONY	Sophomore
MAHONEY, EUGENE	III Academic
MANNEBACH, JOHN	I Academic

MARTINS, JOHN	I Academic
MATTES, PETER	Freshman
MAURER, HENRY	III Academic
MEYER, PETER	Senior
MICHEL, FRANK	Sophomore
MICHEL, JOSEPH	Sophomore
MILLER, HERMAN	Freshman
MLSNA, FRANK	II Academic
MLSNA, JAMES	Freshman
MOEDER, JOHN	I Academic
PERL, JEROME	I Academic
PFISTER, JOHN	III Academic
PICARD, ERNEST	Sophomore
PICK, HENRY	III Academic
POECKES, ARTHUR	II Academic
RAUCH, FREDERIC	II Academic
REINIG, ALFRED	II Academic
RINKE, JACOB	I Academic
SCHLIMGEN, HERBERT	I Academic
SCHMITZ, HERMAN	III Academic
SCHOLZEN, LOUIS	I Academic
SCHOOF, LOUIS	III Academic
SCHUH, ALPHONES	Junior
SCHUH, GERALD	I Academic
SCHUSTER, JOHN	Freshman
SEEBERGER, CHAS.	Freshman
SELLEN, HERMAN	III Academic
SELLEN, LEO	II Academic
SHORT, RICHARD	I Academic
SMITH, JOSEPH	II Academic
STAMMEYER, JOSEPH	III Academic
SONNEN, GEORGE	I Academic
STOEGBAUER, EDMUND	II Academic
STURM, PETER	Junior
SWEIGART, EDWARD	II Academic
THUECKS, HERMAN	III Academic
TOOHEY, LEO	II Academic
TUCKER, JOSEPH	III Academic
VANDERBEKEN, GEORGE	I Academic
VESELY, JOHN	Sophomore
WAGNER, EDWARD	III Academic

WAGNER, WALTER	II Academic
WATRY, RENO	III Academic
WESTENBERGER, EDWARD	Junior
WHITTLE, JOSEPH	Sophomore
WIBBERT, ARNOLD	Senior
WILDENBORG, BERNARD	II Academic
WINDT, JOSEPH	I Academic
ZUERN, ALEX	II Academic





FORM OF BEQUEST

I bequeath to the Province of St. Joseph of the Capuchin Order, for the uses and purposes of the

St. Lawrence College

the sum of.....Dollars



Students will return Wednesday, September 4, 1918
Next Term opens Thursday, September 5

